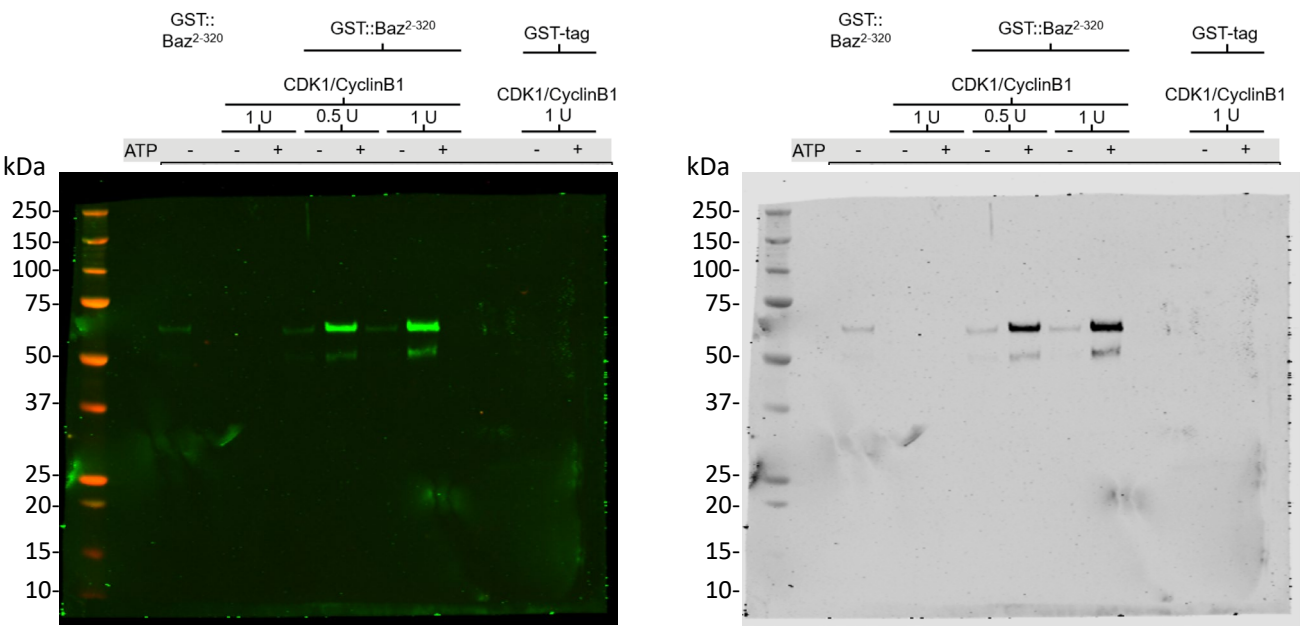
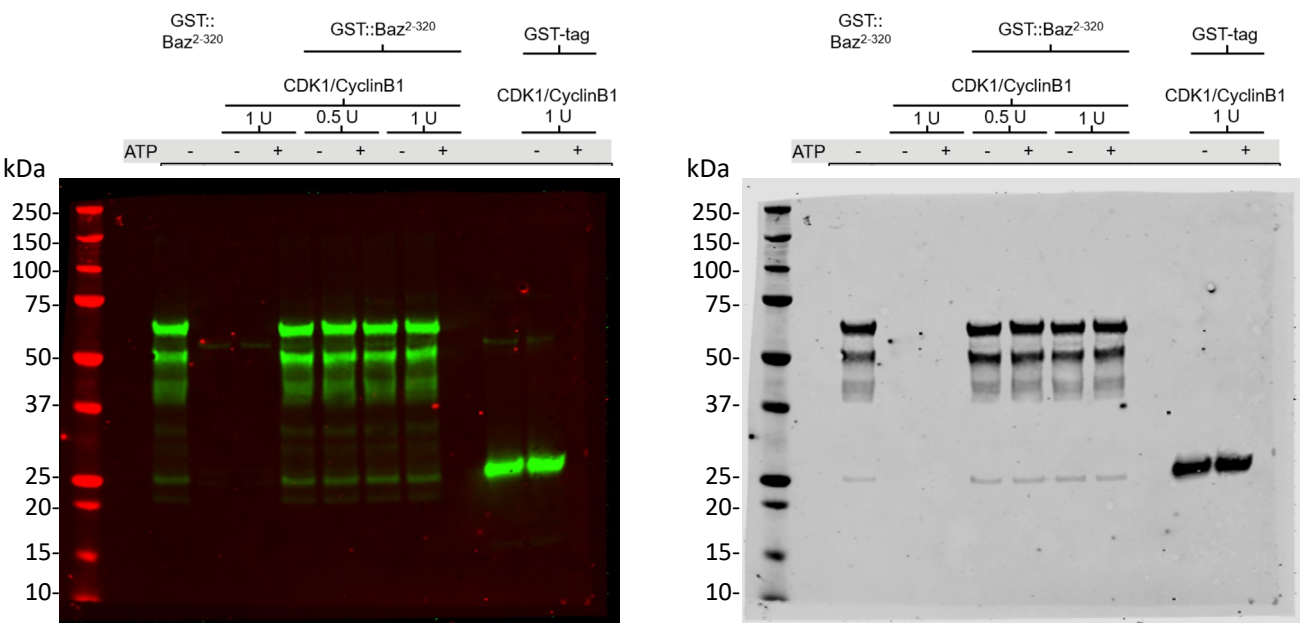


Supplementary western blot images corresponding to Figure 7B.



**1. Full western blots corresponding to Figure 7B “left panel”.** Left, dual-colour LICOR fluorescent image of 800nm (green, anti-Baz-pS180 antibody) and 700nm (red, ladder) channels. Right, same image in black and white.



**2. Full western blots corresponding to Figure 7B “right panel”.** Membrane stripped and reprobed with anti-GST antibody. Left, dual-colour LICOR fluorescent image of 800nm (green, anti-GST antibody) and 700nm (red, ladder) channels. Right, same image in black and white.